

# Word Time Book



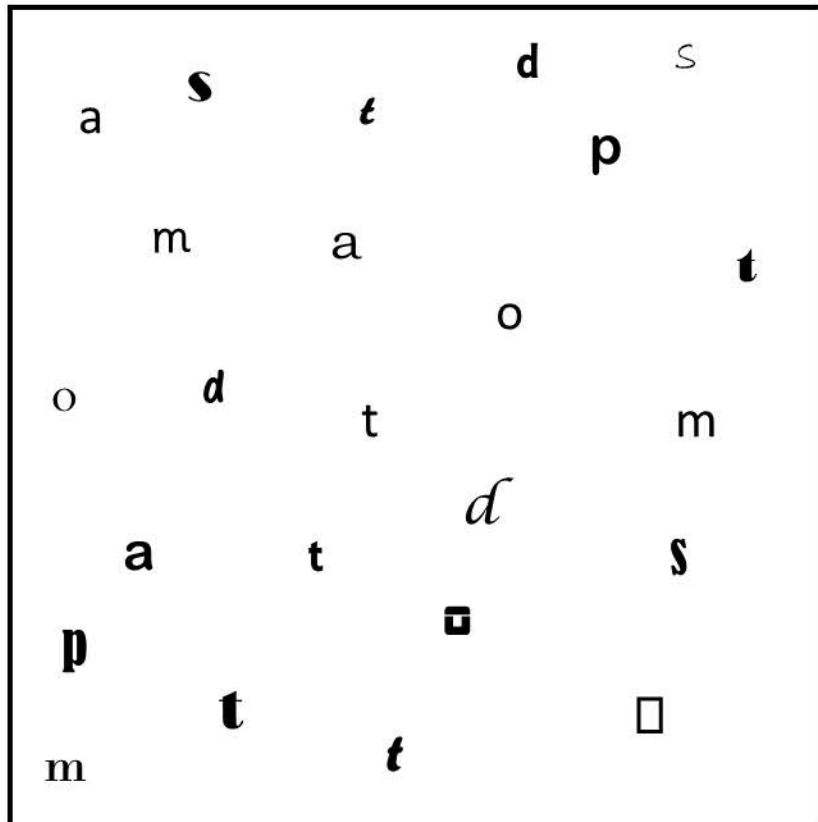
Belongs to:

---

# Read It, Find it

Read and find these sounds in the box below. Circle each one a different colour.

m a s d t



# Super Searcher



Try and find these words:  
mad sad dad mat  
sat sam

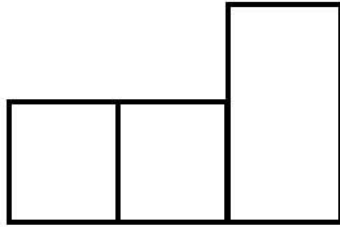
x	y	b	e	s	r	d	a	d	r
y	s	h	n	u	h	g	p	w	f
j	d	y	d	f	w	d	y	a	u
p	b	n	e	x	u	j	s	a	m
m	a	d	s	j	l	n	z	o	g
e	s	a	t	c	i	t	o	u	y
f	l	l	j	u	k	t	b	g	v
m	a	t	g	r	o	t	g	k	g
g	g	f	m	v	f	p	v	h	g
k	z	s	t	s	a	d	x	x	t

# MONSTER MAYHEM

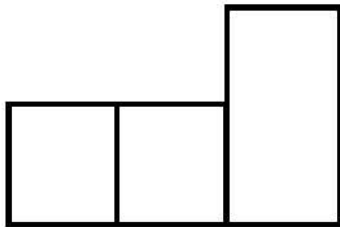


Can you unscramble  
the words below?

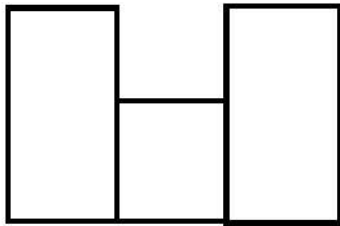
tas



mda



dda

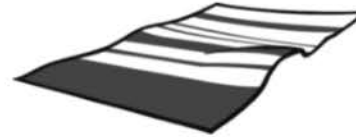


# MATCH IT

Match the pictures to the correct word.



sat



dad




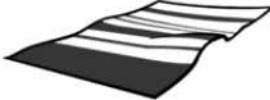


mat



sad

# Read it Write it

Roll a dice and move the number of spaces you rolled. If you land on a word or a sound read it. If you land on a picture write the word or say the sounds you can hear in the word.

t		dad	mad		sat	Finish
	sat		mat	a	at	d
Start	m	mad		s	Sam	